

**Coventry City Council
Occupational Therapy
Service**

**Frances Kendall
&
Ali Nixon**

What is Occupational Therapy?

We assist people of all ages to identify their needs and aspirations, to maintain and increase independence or involvement, provide advice and information on how to cope with illness or disability.

Where do O.T.'s work?

- NHS and Private Hospitals
- Charities and Voluntary Organisations
- Disabled Living Centres
- Equipment Companies
- Government Agencies
- Schools and Colleges
- Wheel Chair Services
- Universities
- Litigation (Expert Witness)
- Housing Departments
- Industrial and Commercial Organisations
- Local Community Services
- Social Care Services
- Person's Home
- Private Practice
- Residential and Nursing Homes

How do we do it?

- We work with people and assess individual needs to find practical solutions that assist people to achieve their goals
- We provide solutions and build confidence around bathing, dressing and eating
- We offer advice on adapting the home environment to ensure access to facilities
- Assess recommend and provide equipment for home, workplace and school

Coventry Therapy Services

- We offer assessment, advice, information, suitable equipment and housing adaptations as necessary, to assist the person, carer and family
- Provision of service is mainly centred around access to essential facilities in and around the home
- We offer advice and training around Safer People Handling
- We administer and provide assessment for Disabled Parking Badges i.e. The Blue Badge Scheme
- We have a new facility within the service, The Opal Assessment and Demonstration Centre

Our Intervention Aims

- To enable each person to function in their chosen environment
- To prevent further loss of function and ability
- To maintain and increase function and ability
- To give choice and control by utilising:
 - User led Goals
 - Direct Payments



Coventry Demonstration and Assessment Centre

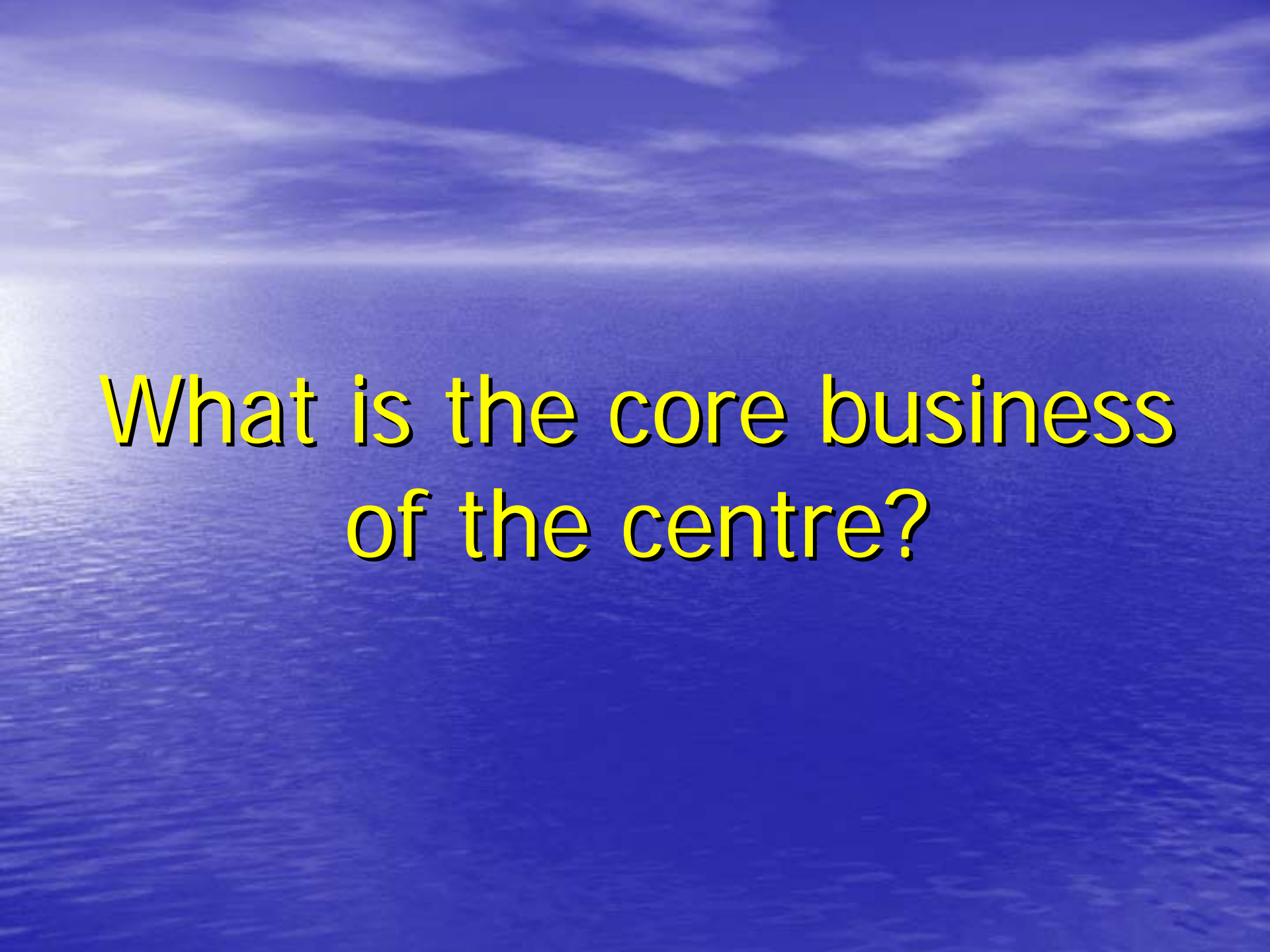
Our aim is assist you to find solutions that will enable you to maintain active, independent lives

A background image showing a vast blue ocean meeting a blue sky with light, wispy clouds. The sun is visible on the left side, creating a bright glow and a reflection on the water's surface.

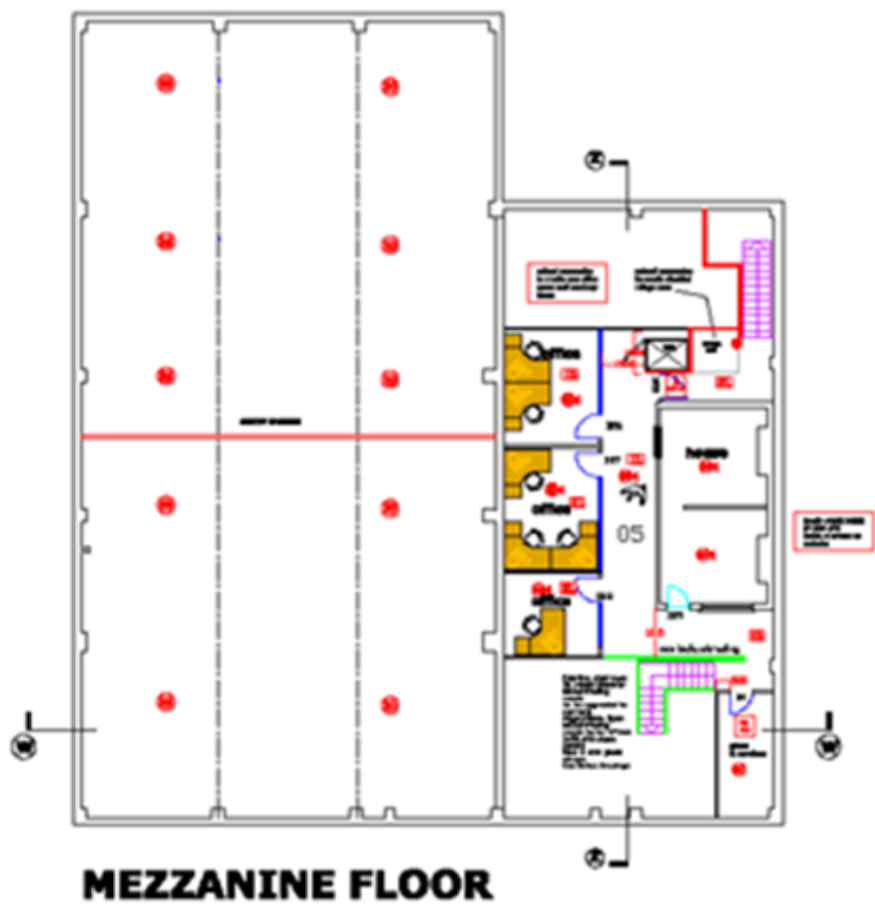
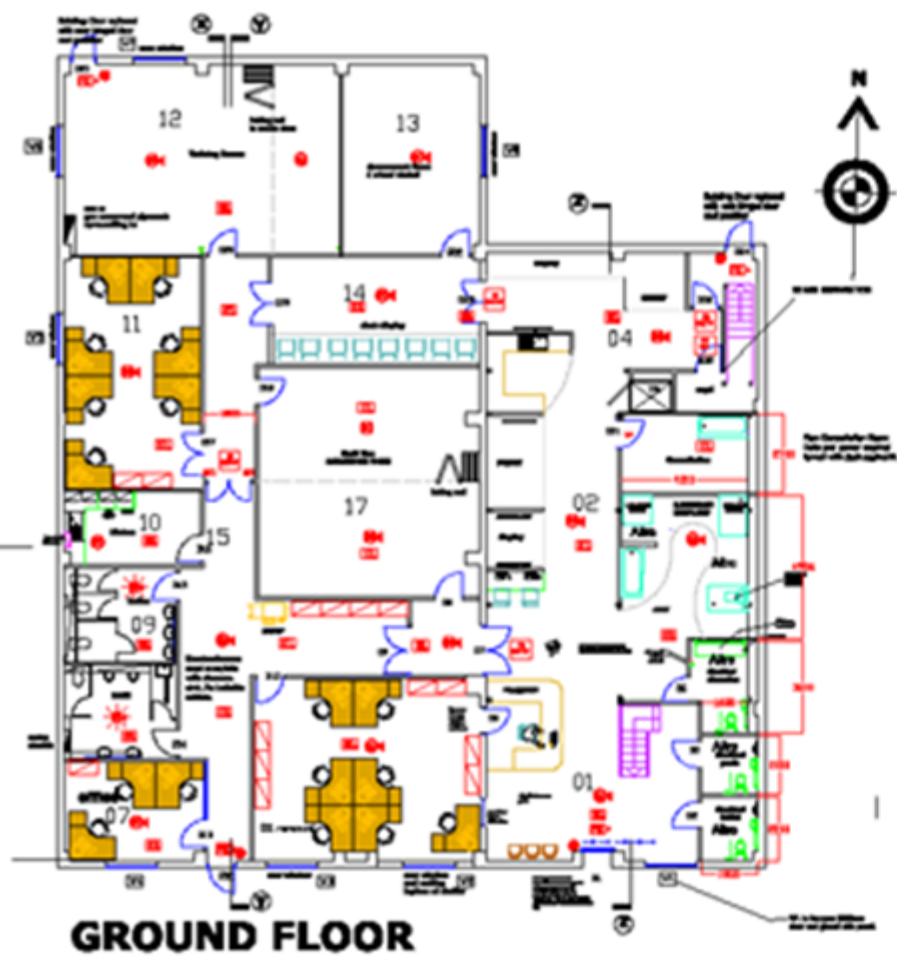
Why do we need a centre?

A blue sky with light clouds over a blue ocean with a sun reflection.

Who is the Centre for?

The background of the slide is a photograph of a vast blue ocean meeting a bright blue sky with wispy white clouds. The sun is visible on the left side, creating a shimmering reflection on the water's surface. The overall scene is serene and expansive.

What is the core business
of the centre?



Opening of the Centre Planned for January

